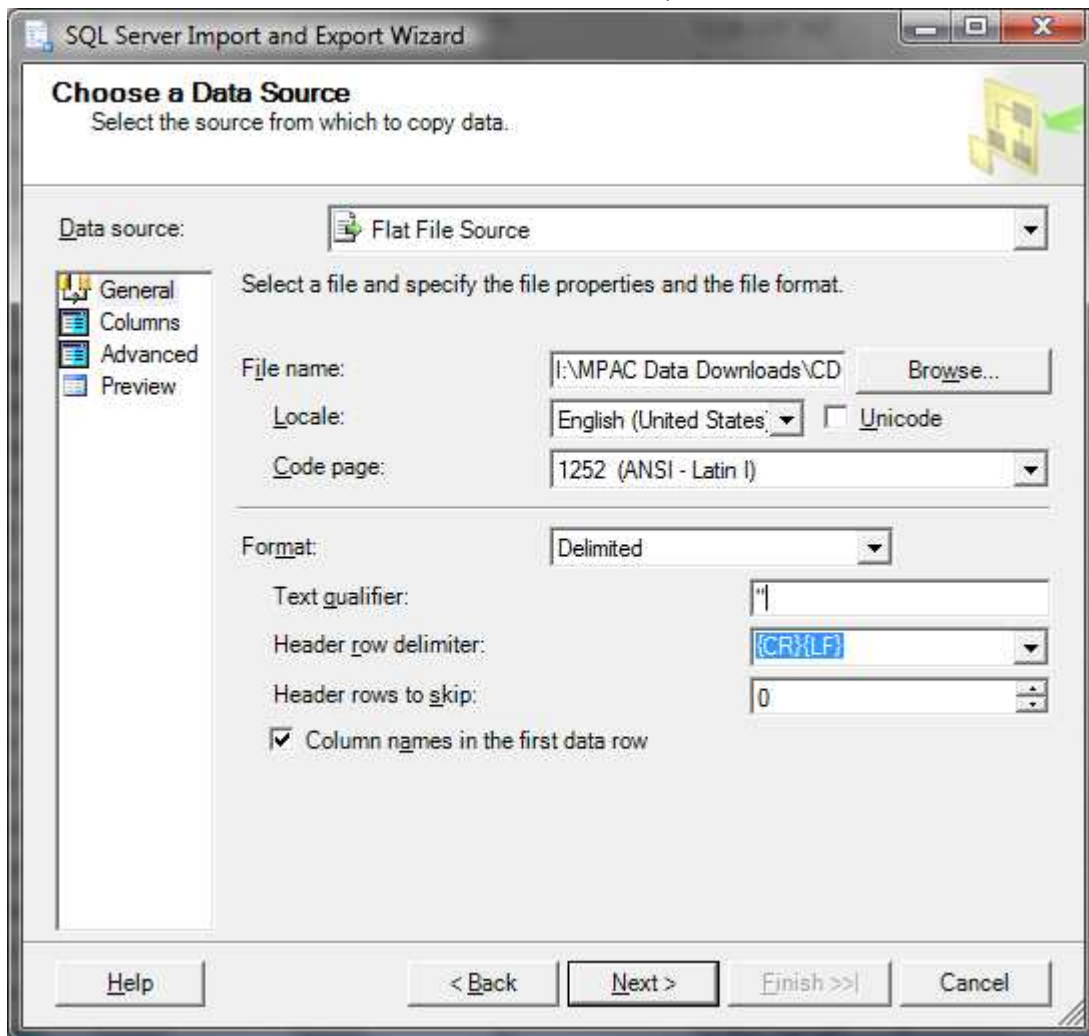


## GIN/POPA Import Procedure

### Part 1

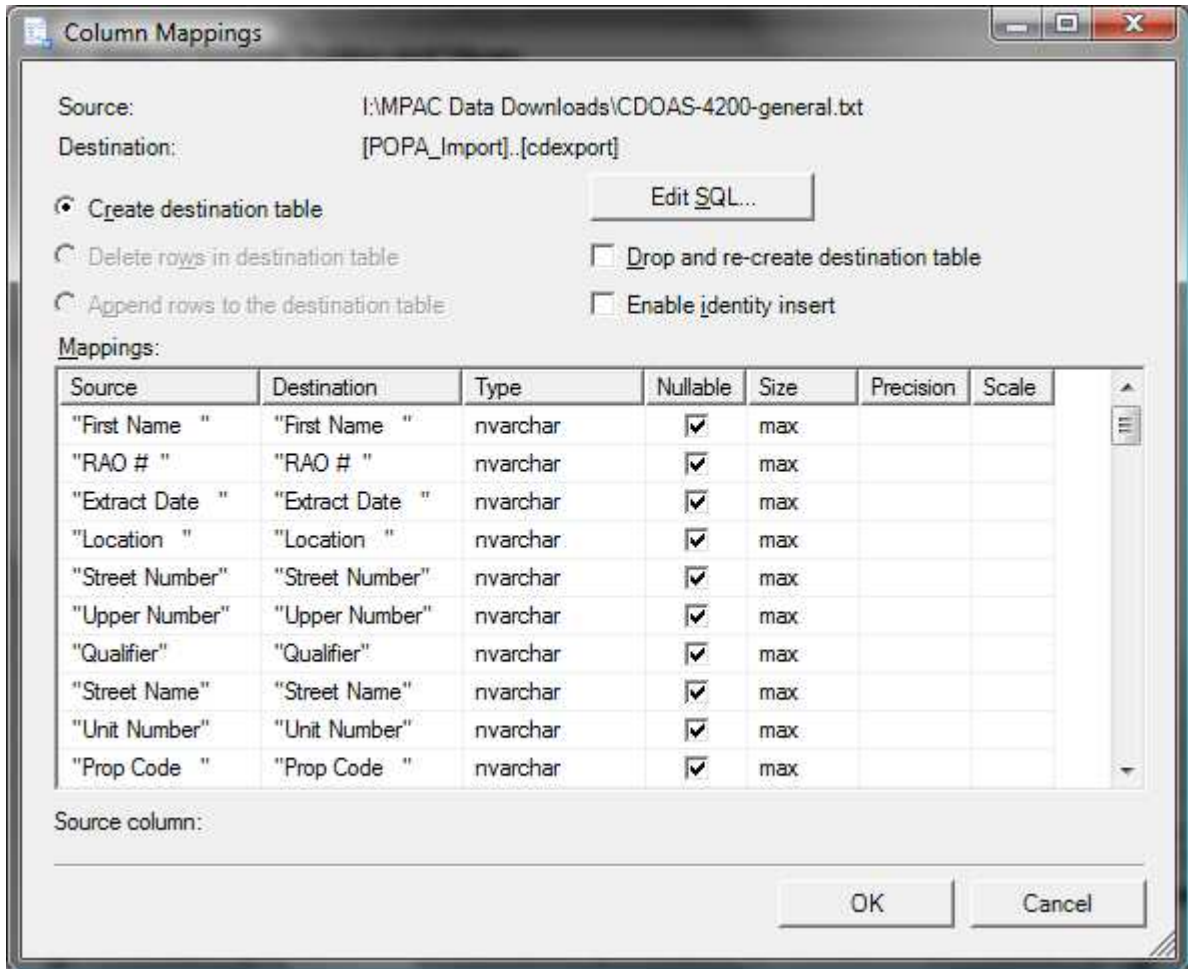
This first section prepares the database schema for importing data. These steps only need to be done for the first import, and can be skipped on subsequent imports.

1. Create a new, empty SQL database on a SQL 2005 Standard or Enterprise server
2. Right click on the new database, select Tasks, Import Data. Specify "Flat File Source" and browse to the CDOAS-4200-general.txt file extracted from the MPAC download, and select "Column names in the first data row", and set the text qualifier to "".



3. On the destination page, leave the defaults to import into the empty database.

- On the source tables and views page, specify the destination as cdexport, then click the edit mappings button. Set every field to varchar max



- Follow through the rest of the wizard. You will likely get an error inserting the data into the table, which is fine since this procedure just creates the table schema, the actual import will happen later.
- Repeat steps 1-5 for CDOAS-4200-name.txt as addr, CDOAS-4200-structure.txt as cdimport, and CDOAS-4200-sale.txt as sales.

## Part 2

In this section, you will import the downloaded text files into SQL tables, then export them in the same format as the old CDOASIS export files.

1. Extract the text files from the MPAC download to the local hard drive of the SQL server. Open a new query window, and type the following commands to import the text file into the table after removing any existing data. Note that this process will take a few minutes depending on the size of the text files.

```
delete from dbo.cdexport;
```

```
bulk insert dbo.cdexport  
from "d:\mpac\CDOAS-4200-general.txt"  
with (FIELDTERMINATOR=',',ROWTERMINATOR='\n',CODEPAGE='ACP',FIRSTROW=2);
```

2. Repeat the previous step with the addr table and CDOAS-4200-name.txt, cdimport table and CDOAS-4200-structure.txt, and sales table with CDOAS-4200-sale.txt
3. Right click the import database, select tasks, export data. Accept the defaults on the source page.

4. Choose Flat File Destination and type in a filename for the output.

The screenshot shows the 'SQL Server Import and Export Wizard' window, specifically the 'Choose a Destination' step. The window title is 'SQL Server Import and Export Wizard'. The main heading is 'Choose a Destination' with the instruction 'Specify where to copy data to.' Below this, there is a dropdown menu for 'Destination' set to 'Flat File Destination'. A sub-instruction reads 'Select a file and specify the file properties and the file format.' The 'File name' field contains 'D:\mpac\addr.txt' with a 'Browse...' button to its right. The 'Locale' is set to 'English (United States)' with a 'Unicode' checkbox that is unchecked. The 'Code page' is set to '1252 (ANSI - Latin I)'. The 'Format' dropdown is set to 'Delimited'. The 'Text qualifier' field contains '<none>'. There is an unchecked checkbox for 'Column names in the first data row'. At the bottom, there are five buttons: 'Help', '< Back', 'Next >', 'Finish >>', and 'Cancel'.

SQL Server Import and Export Wizard

**Choose a Destination**  
Specify where to copy data to.

Destination: Flat File Destination

Select a file and specify the file properties and the file format.

File name: D:\mpac\addr.txt Browse...

Locale: English (United States)  Unicode

Code page: 1252 (ANSI - Latin I)

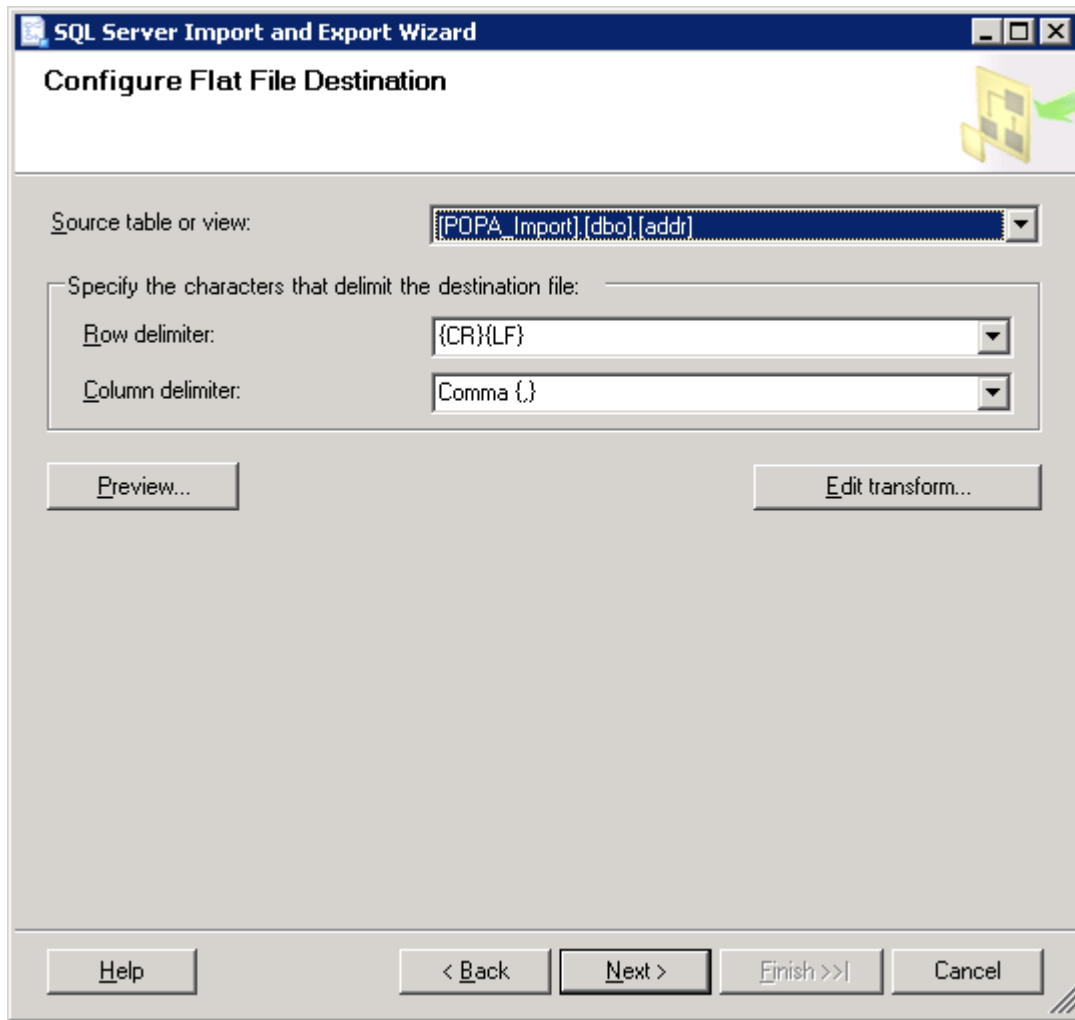
Format: Delimited

Text qualifier: <none>

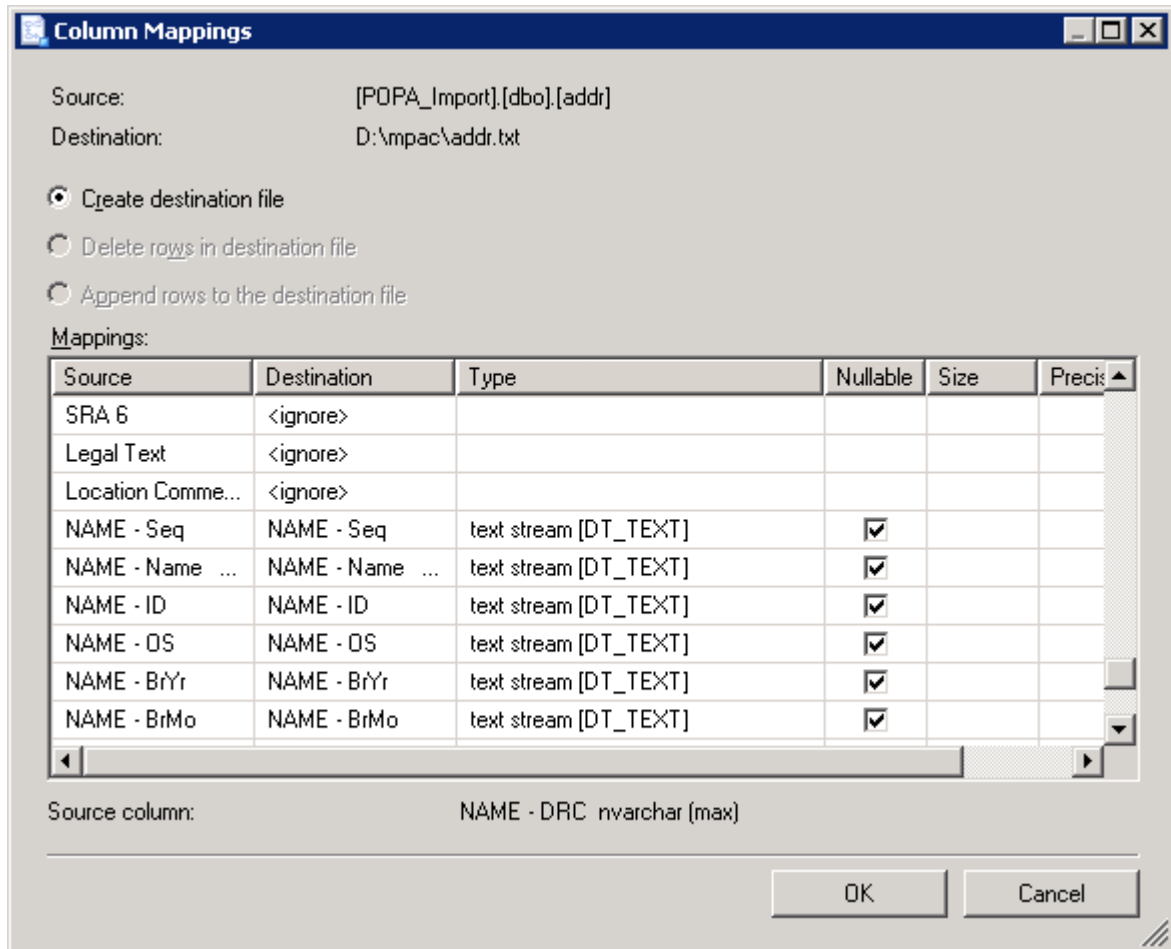
Column names in the first data row

Help < Back Next > Finish >> Cancel

5. Select the appropriate source table

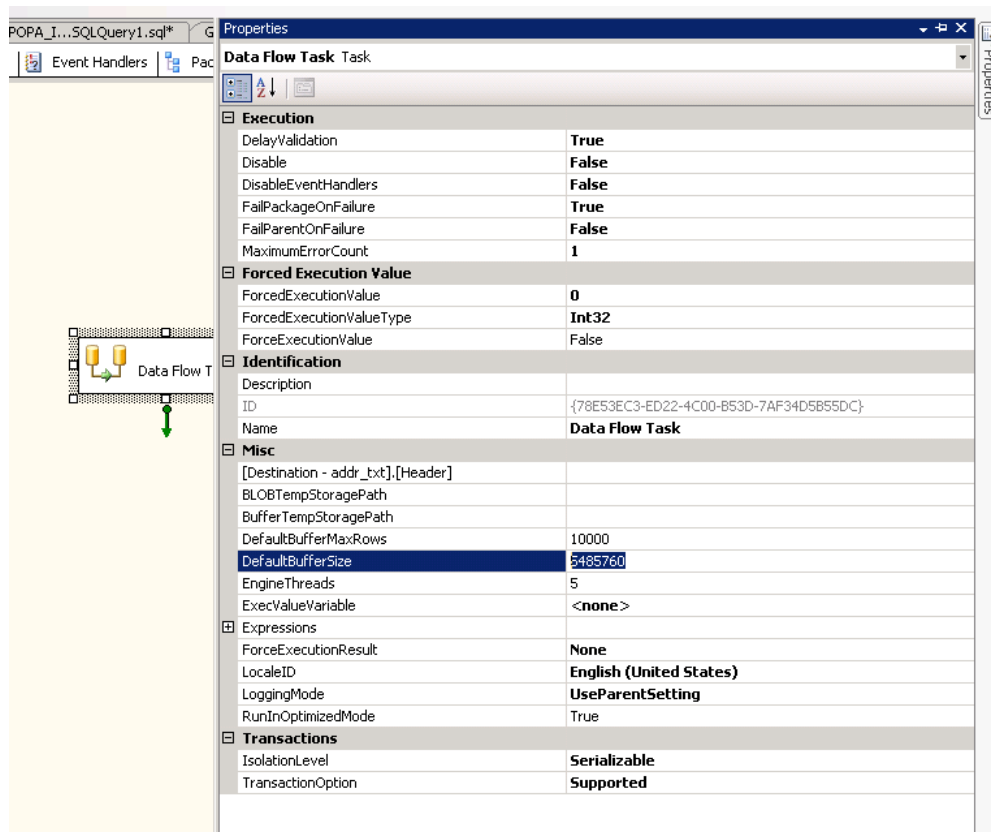


- Click the edit transform button and set all unused fields to ignore, based on the old import documentation fields. Make sure the field types are set to text stream.

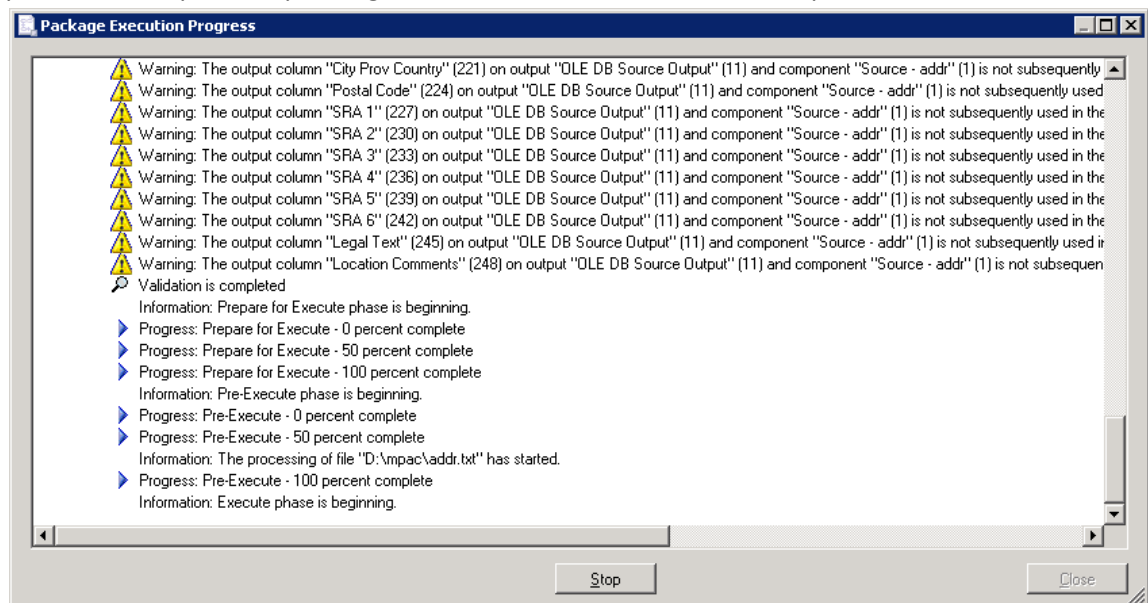


- Specify to save the SSIS package to the filesystem, and de-select execute immediately.

- In the SQL management studio, open the SSIS package saved in the previous step. Select the Data Flow Task, and navigate to the properties pane. Decrease the DefaultBufferSize to about half of the default value.



- Save the changes to the package.
- Double click the package in windows explorer and click execute. If you get warnings about output columns not being used you can ignore them. The process will take about 30 minutes per file to complete, depending on the resources available on the sql server.



11. Repeat the above process for all 4 text files that need to be generated.
12. Backup the production GIN/POPA database.
13. Copy the generated text files to the import workstation hard drive.
14. Login to GIN as the administrator and choose import CD-Oasis from the file menu.